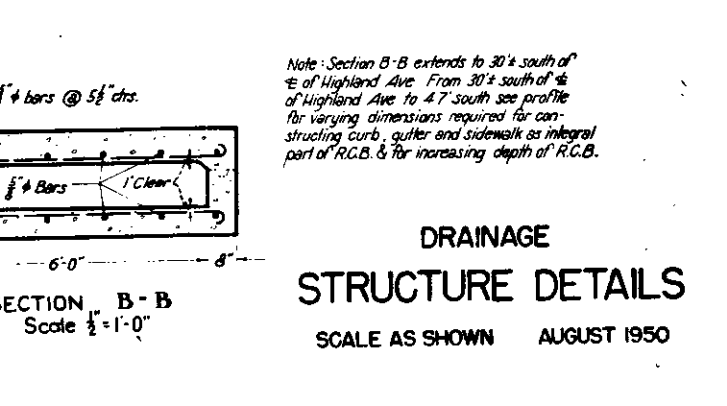
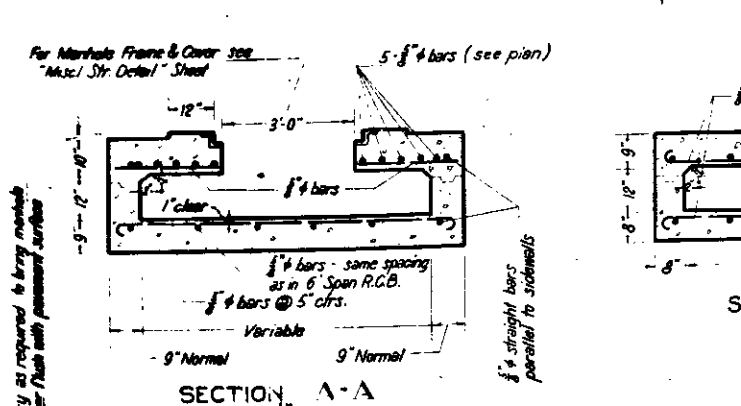
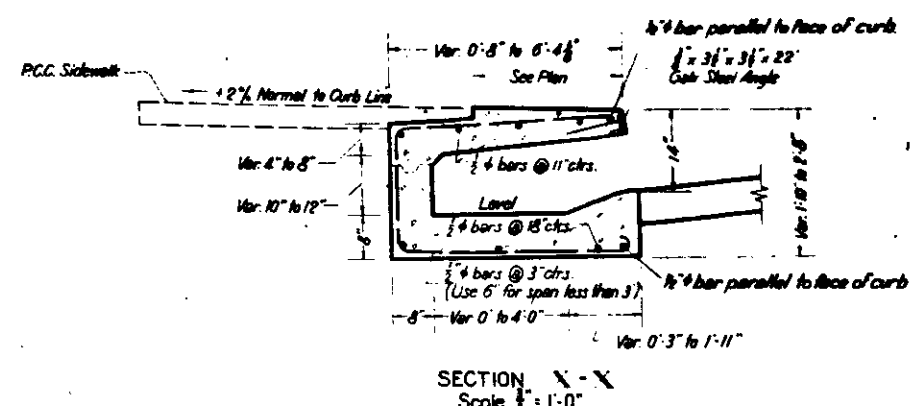
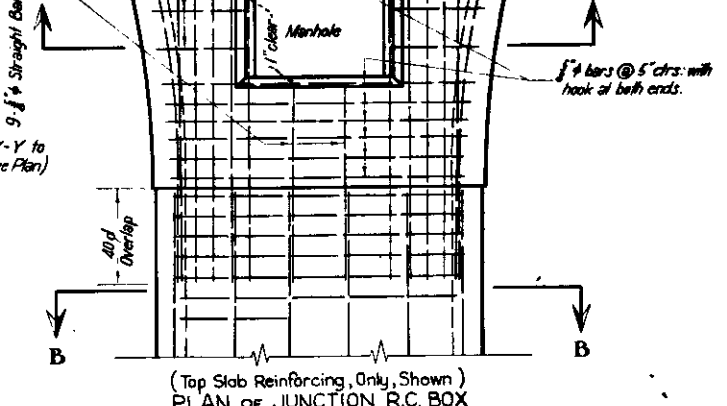
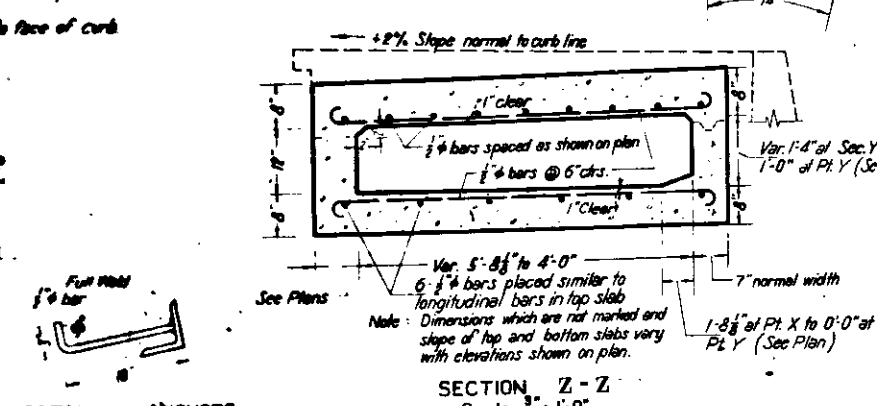
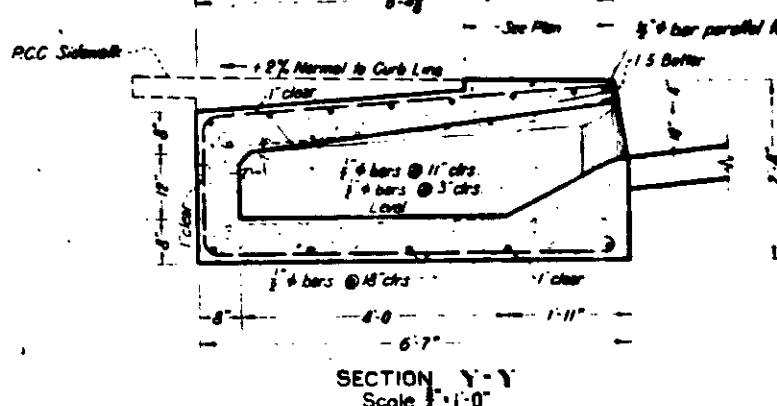
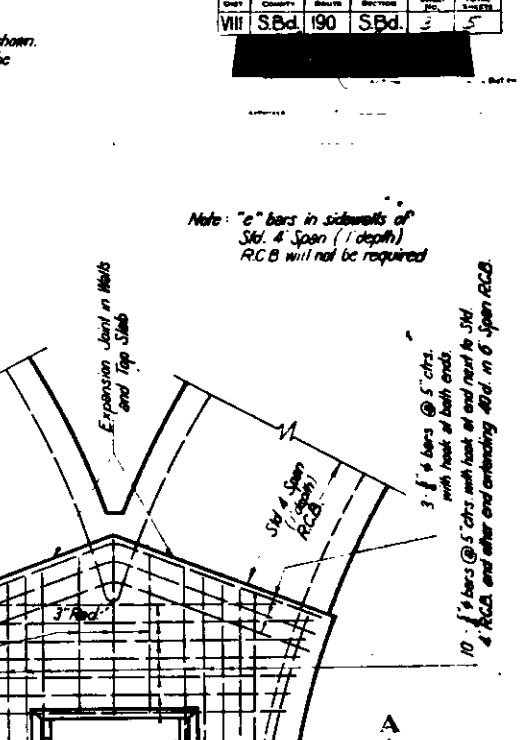
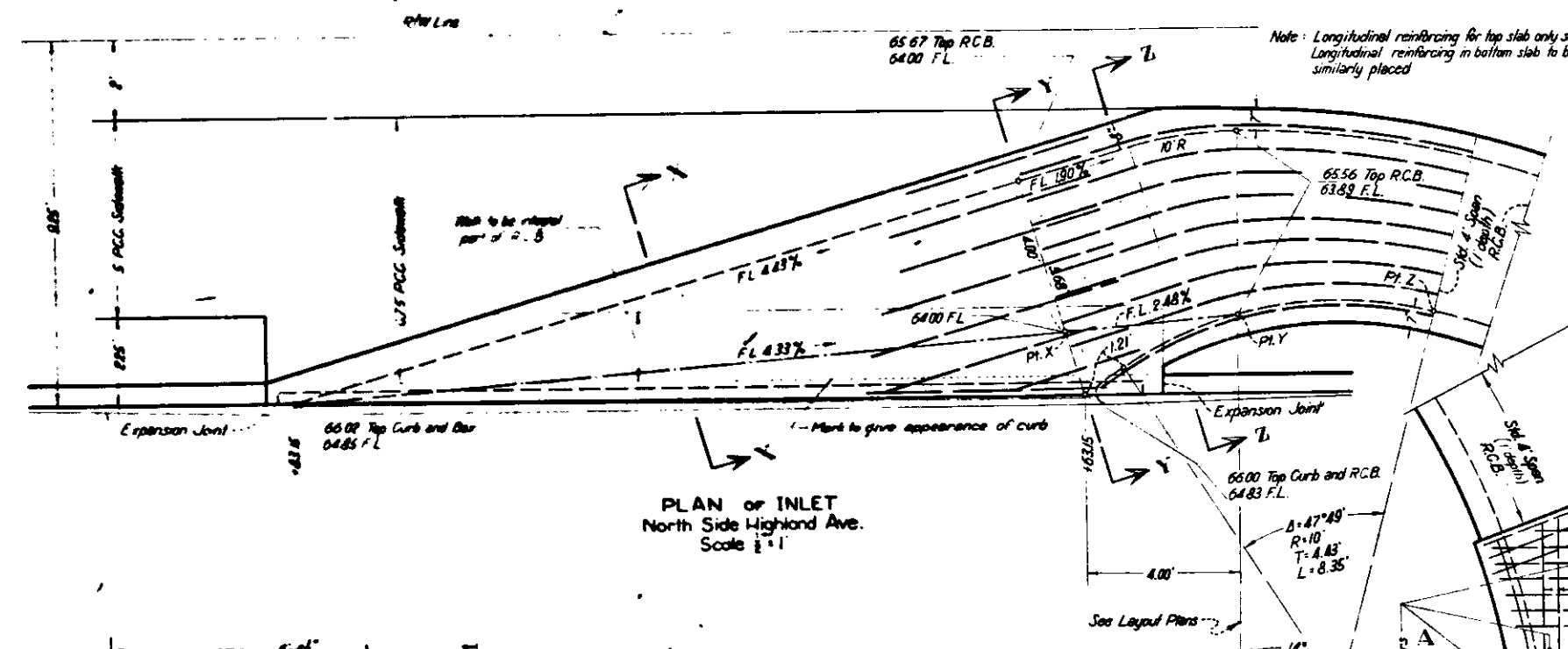
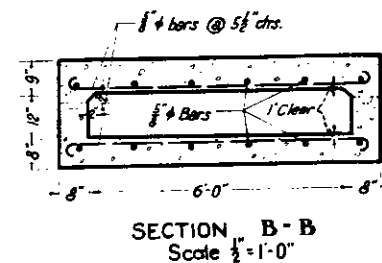
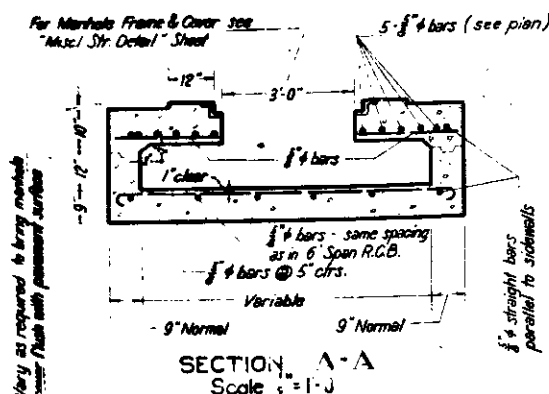
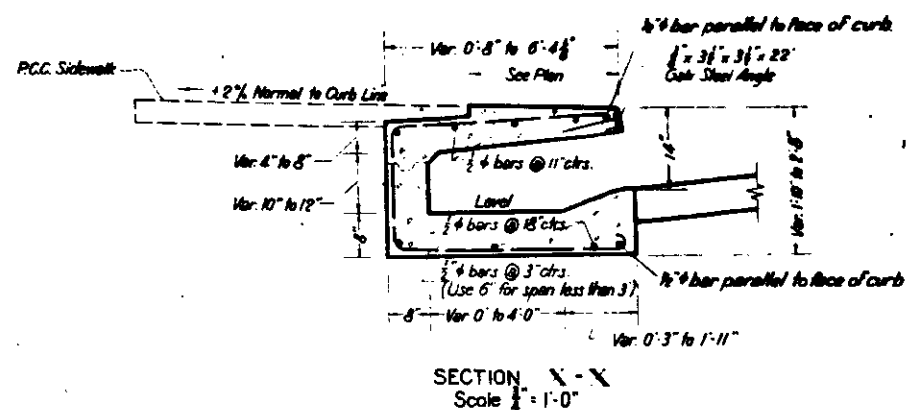
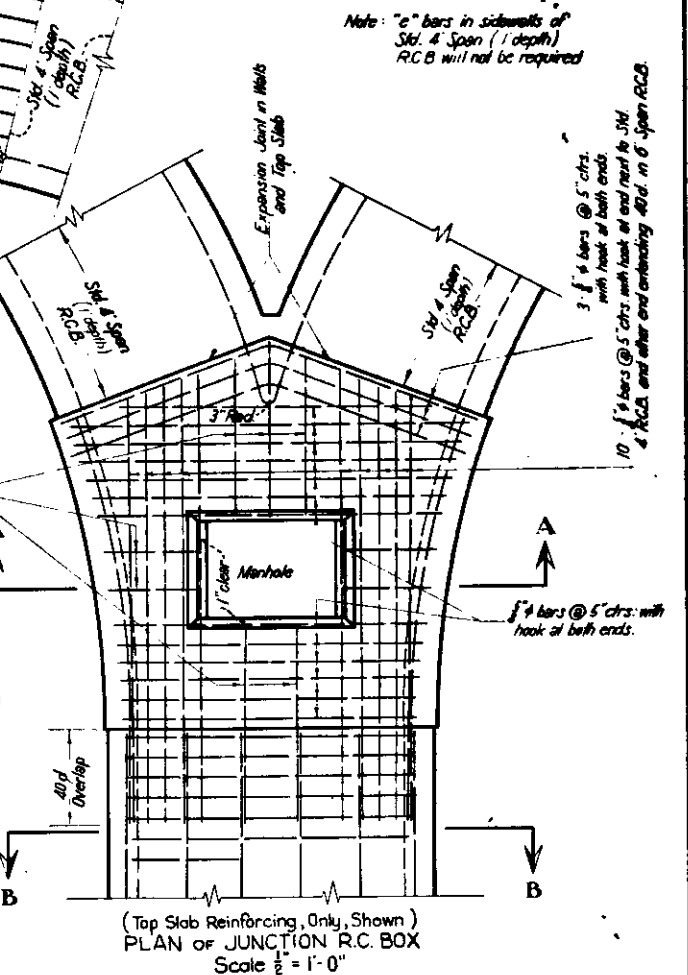
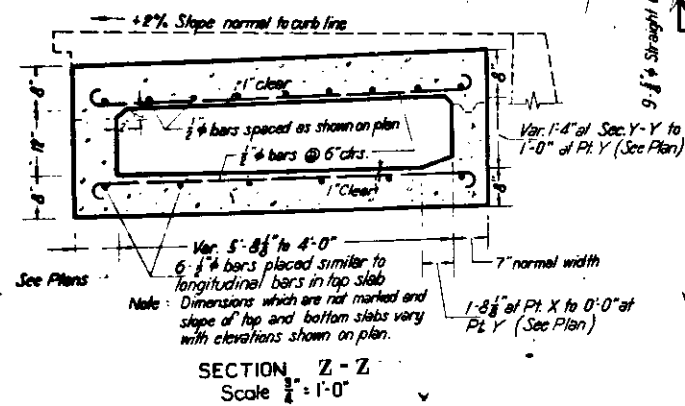
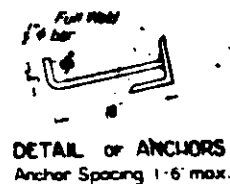
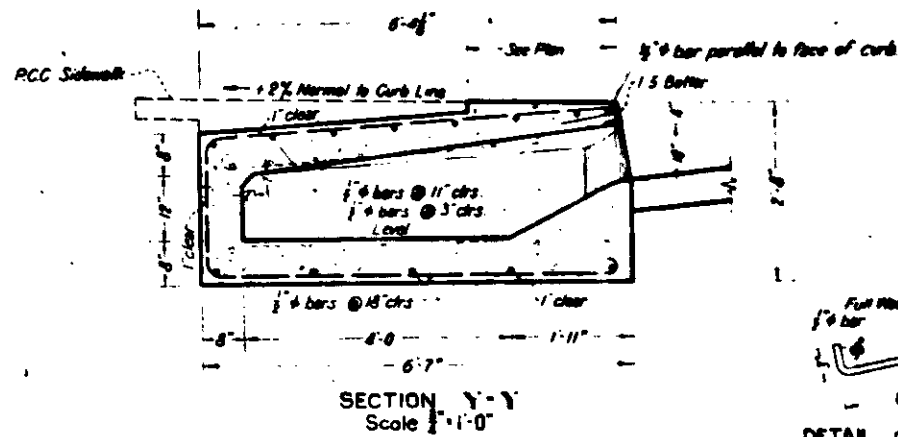
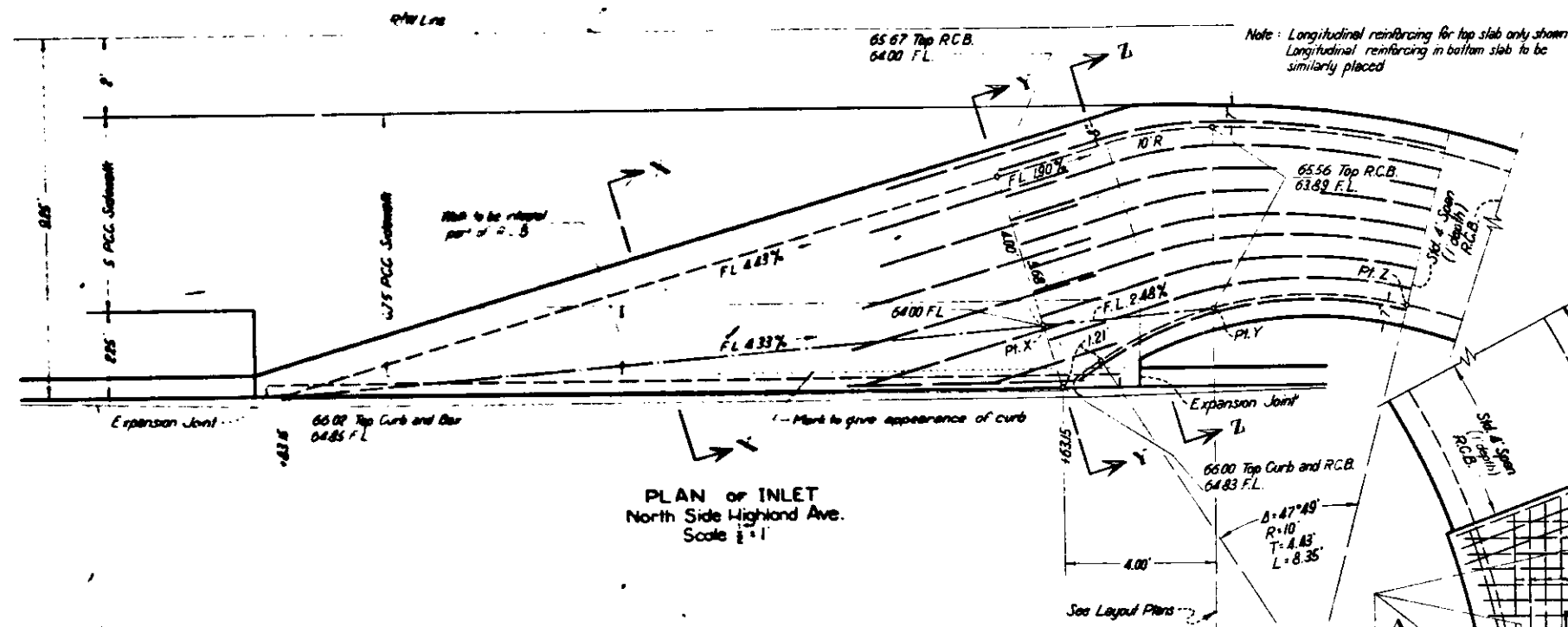


P.L. NO.	STATE	FEDERAL PROJECT NO.	FISCAL YEAR	SHEET NO.	TOTAL SHEETS
VIII	CALIF.	S.Bd. 190	S.Bd.	5	5



**DRAINAGE
STRUCTURE DETAILS**
SCALE AS SHOWN AUGUST 1950

PRJ. NO.	STATE	FEDERAL PROJECT NO.	FISCAL YEAR	SHEET NO.	TOTAL SHEETS
VIII	S.Bd. 190	S.Bd.			



Note: Section B-B extends to 30' south of 'E' of Highland Ave. From 30' south of 'E' of Highland Ave. to 4.7' south see profile for varying dimensions required for constructing curb, gutter and sidewalk as integral part of R.C.B. & for increasing depth of R.C.B.

DRAINAGE STRUCTURE DETAILS

SCALE AS SHOWN AUGUST 1950